

PERSONAL SAFETY ADVICE

FOR
TYLERS GREEN
MIDDLE
SCHOOL



Why are we here today?

- Identify potential dangers and learn strategies to avoid or handle them
- learn the basic principles of personal safety while walking home from school.





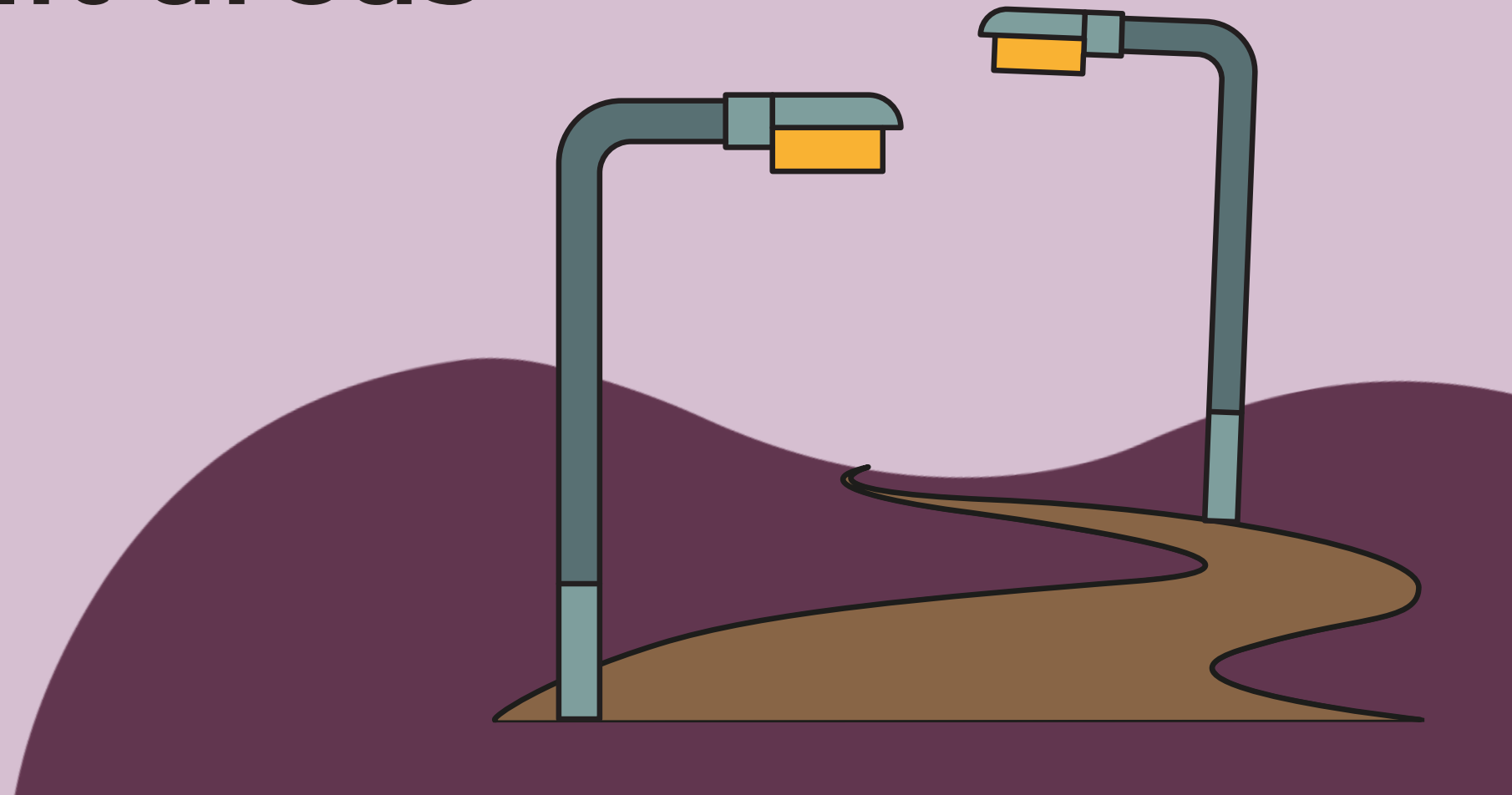
Walk With a Friend

Pay attention to your surroundings, trust your instincts, and seek help if needed.



2

Stay in well-lit areas



3

Know Your Route

Make sure that your family know which way you walk home and avoid shortcuts





If you are walking alone

DO NOT wear headphones

Pay attention to your surroundings -
ALWAYS check when crossing the roads



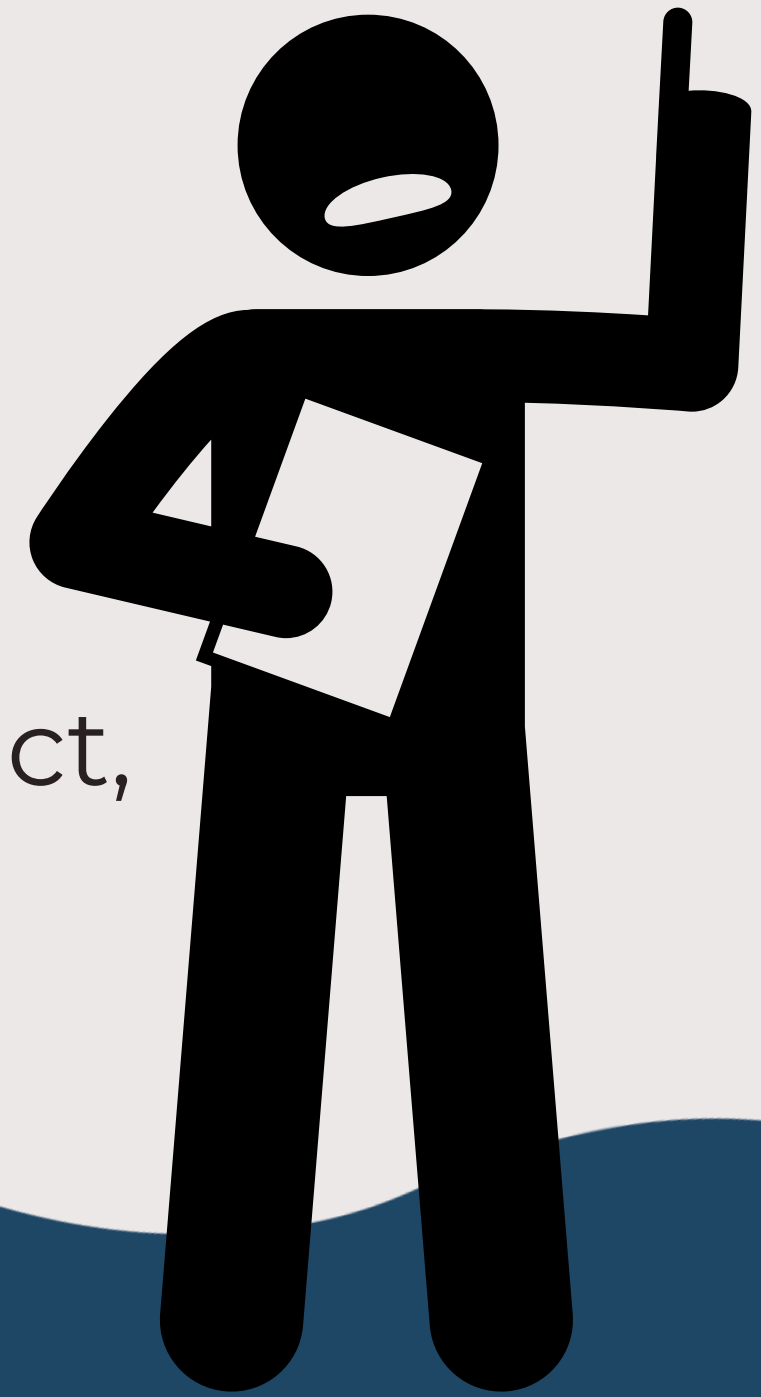
**What should I do if
approached by a
stranger?**



5

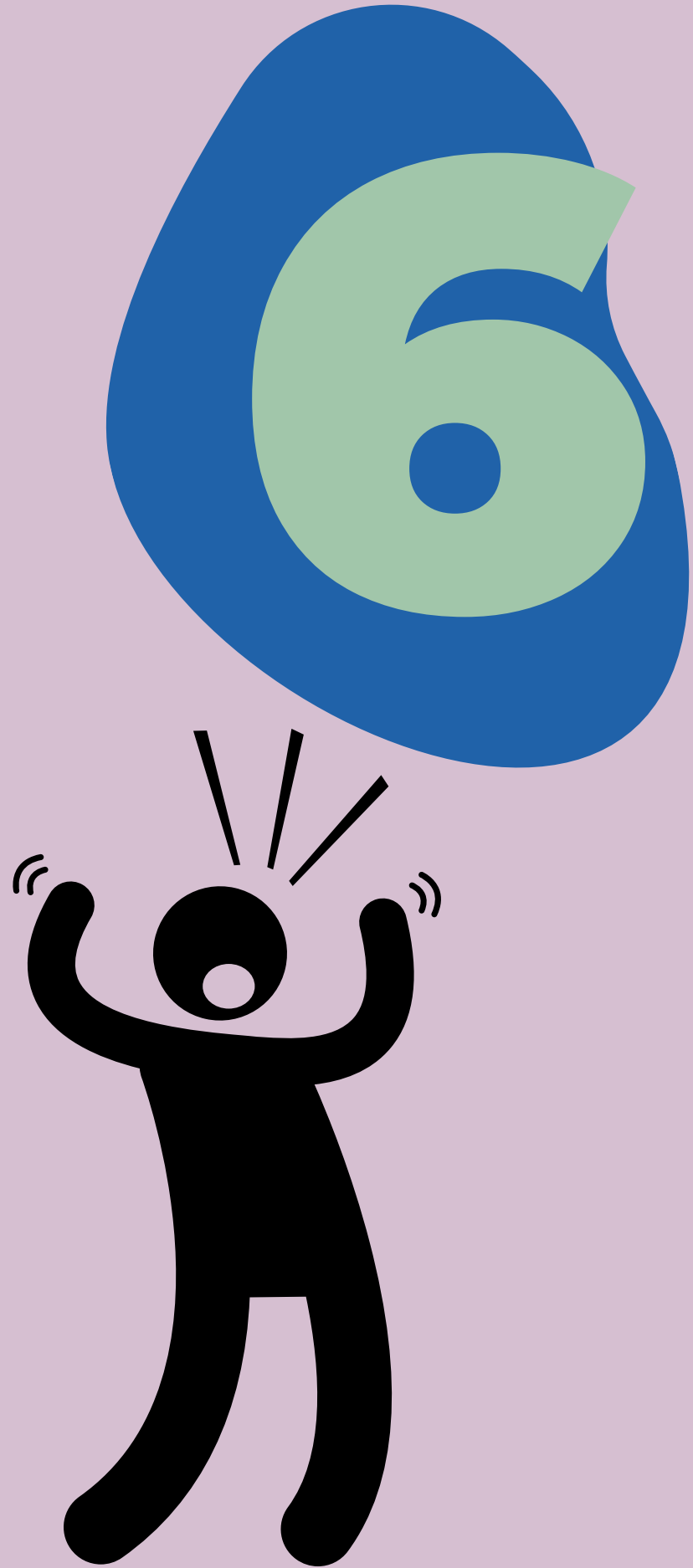
Stay Calm, Be Assertive

Speak in a loud and firm voice, making eye contact,



Get Away & Make Noise

- Get away from the stranger as quickly and safely as possible. Students should run to a safe place, such as a public building, shop, or police station, and seek help from a trusted adult or authority figure
- Make noise and attract attention - shout



Remember the 3 R's

- **RECOGNISE** - Potential dangers and be aware of your surroundings
- **REACT** - React appropriately to the situation. Learn to handle or avoid the danger
- **REPORT** Report any suspicious or dangerous activity to a trusted adult or authority figure.



